



Patent Pending

Fast Knockdown Mite Treatment

GUIDE

- ✓ ***FAST KNOCKDOWN OF
POULTRY RED MITE***
- ✓ ***DUST PENETRATING
FORMULATION***
- ✓ ***EFFECTIVE ON
SPECIES RESISTANT
TO CHEMICAL
INSECTICIDES***
- ✓ ***FOR USE AS A
SURFACE SPRAY***
*Apply according to the
recommended directions of use*



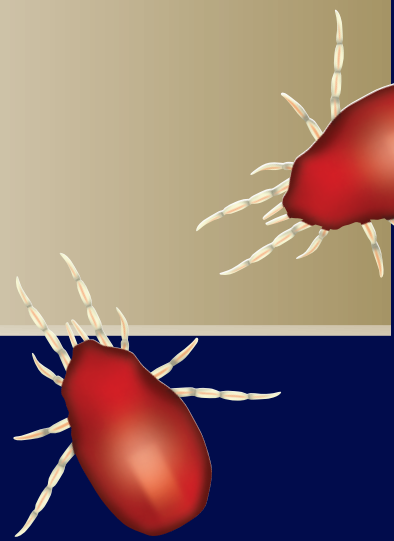
Barrettine
Environmental Health



Patent Pending

MiteMax[®] is highly effective against poultry red mite (*Dermanyssus gallinae*) and flour mite (*Acarus siro*). MiteMax[®] is a patent pending formulation that has been optimised to penetrate the dusty layers typically found within hen houses and grain stores to spread deep into the cracks and crevices that harbour mites.

MiteMax[®] contains an advanced food grade cellulose polymer that acts on contact with the mite. MiteMax[®] functions as a sticky trap rendering mites irreversibly immobile providing rapid knockdown. MiteMax[®] has a physical mode of action by trapping and the death/ killing effect is the consequence of this, which means it both falls outside the scope of the biocide directive (exempted from EU Reg. 528/2013) and also is effective against mites resistant to chemical insecticides.



Resistance Management

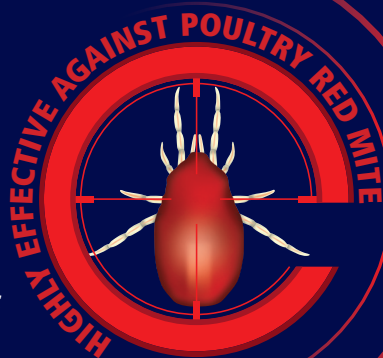
MiteMax[®] gives you versatility because it can be used at any stage in the flock cycle after clean down, before restocking or to treat first signs of infestation in flocks. MiteMax[®] can be used either as a stand alone treatment or in sequence with conventional insecticides.

With limited residual effect, MiteMax[®] is the ideal product for egg producers concerned about pesticide contamination. MiteMax[®] can also be used as a pre-treatment when planning to introduce integrated control strategies such as biological control programmes based on predatory mites.





Patent Pending



- ✔ **FAST KNOCKDOWN**
- ✔ **PENETRATES DEEP INTO THE DUST LAYERS TO ALL AREAS OF MITE HARBOURAGE**
- ✔ **NO DEVELOPMENT OF RESISTANCE***
* Effective on species resistant to chemical insecticides

How to use

	Poultry Houses	Grain Stores
Before Spraying	Ensure all chicken eggs are removed before spraying MiteMax [®] . To improve spray contact with mites where practical remove belt covers, shrouds etc. to expose mite harbourage areas.	Before spraying MiteMax [®] , thoroughly clean the empty store using an industrial vacuum. Remove as much dust and debris from ducts, conveyors, and other potential areas of mite infestations.
Rate of Use	MiteMax [®] is a concentrate and therefore needs to be diluted in the ratio of 1 part MiteMax [®] to 7.5 parts of clean water.	
Preparing the sprayer & spray solution	Wash out sprayer with water and detergent before use. Half fill the sprayer with water, add the required amount of Mitemax [®] and make up to the final volume with water. Close the sprayer and ensure contents are thoroughly mixed before use. Shake or re-agitate sprayer before use if spraying is interrupted.	
Application	Pressurise spray vessel and apply spray as a coarse, low pressure spray directed over clusters of mites and crevices/dusty sections where pests hide or live. Application should be applied to runoff. Absorbent surfaces require higher rates. MiteMax [®] should not be sprayed directly onto hens.	Pressurise spray vessel and apply spray as a coarse, low pressure spray onto the fabric of empty grain stores. Ensure good coverage of conveyors, ducts and other potential areas of mite harbourage. Surfaces should appear wet just after application. MiteMax [®] should not be applied directly onto the grain.
Coverage	8.5 litres of dilute solution will treat approximately 200 m ²	
Notes	It is recommended to re-apply MiteMax [®] to flare up areas as needed and re-apply 6 - 8 weeks later, or when pests reappear.	If beetle or weevil species are the major pest we recommend the use of K-Obiol EC 25.



Patent Pending

Fast Knockdown Mite Treatment



Patent Pending

- FAST KNOCKDOWN OF POULTRY RED MITE
- DUST PENETRATING FORMULATION
- EFFECTIVE ON SPECIES RESISTANT TO CHEMICAL INSECTICIDES
- FOR USE AS A SURFACE SPRAY

Apply according to the recommended directions of use

A water soluble concentrate with a physical mode of action effective against Poultry Red Mite (*Dermanyssus gallinae*) and Free Mite (*Ooortosia* spp.). MitoMax will also trap other small crawling insects. For application in and around areas housing, empty granaries, in warehouses, mills and other agricultural buildings, MitoMax must not be sprayed directly onto livestock or bulk commodities. MitoMax has a physical mode of action as a sticky trap and as a consequence of this, leads to death. MitoMax is a non bioactive product (Exempted from EU Reg. 528/2012)

Contains: Imipramine, Siloxane Polyhydroxamide Copolymer, Cellulose Ethyl, Preservative
1,4-Benzenedithiol-2-one, Methylisothiazolinone 3-benzyl and Ethyl-pyridinethione

5 litre e

Barrettine
Environmental Health

Barrettine
Environmental Health

St. Ivel Way, Warmley, Bristol BS30 8TY.
T: +44 (0) 117 967 2222 F: +44 (0) 117 961 4122
E: beh@barrettine.co.uk www.barrettine.co.uk